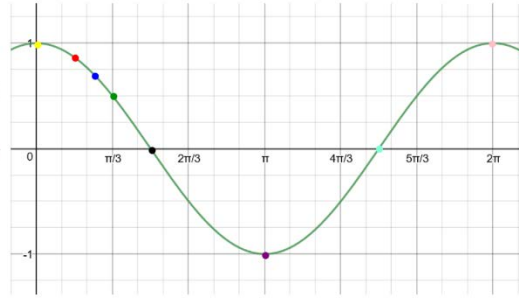
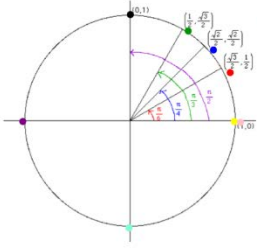


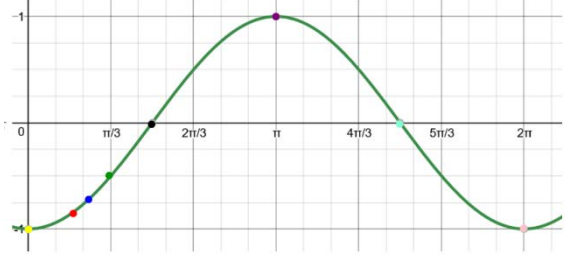
# Cosine Function Handout

Basic Cosine Function:

$$f(\theta) = \cos \theta$$



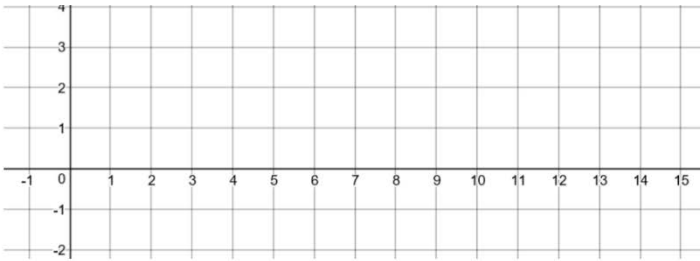
$$f(\theta) = -\cos \theta$$



example #1

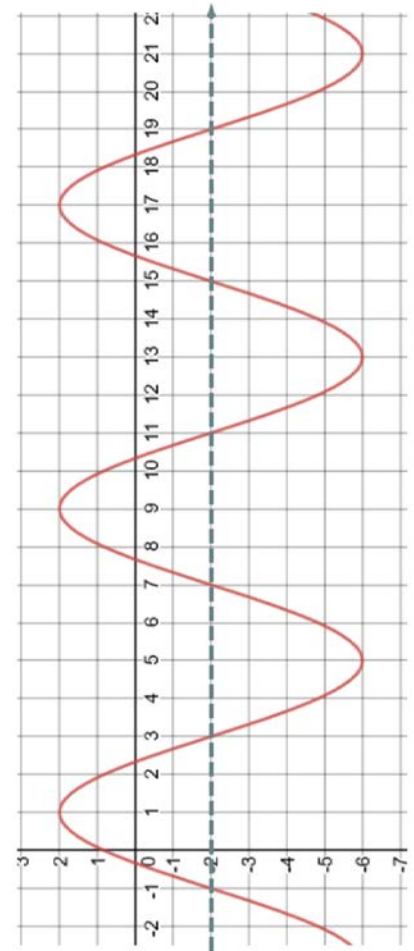
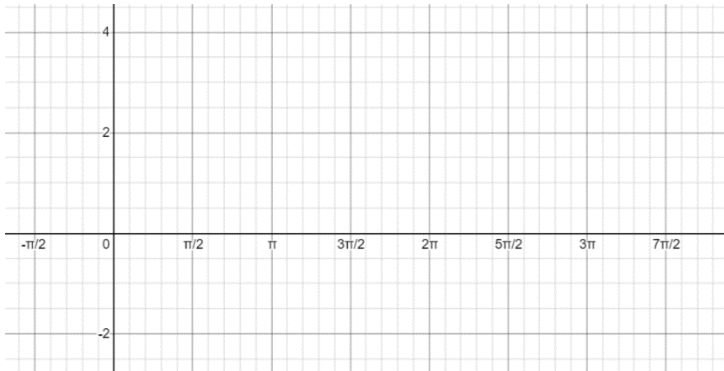
$$y = -2 \cos \frac{-\pi}{4}(x - 3) + 1.$$

$$P = \frac{2\pi}{|b|}$$



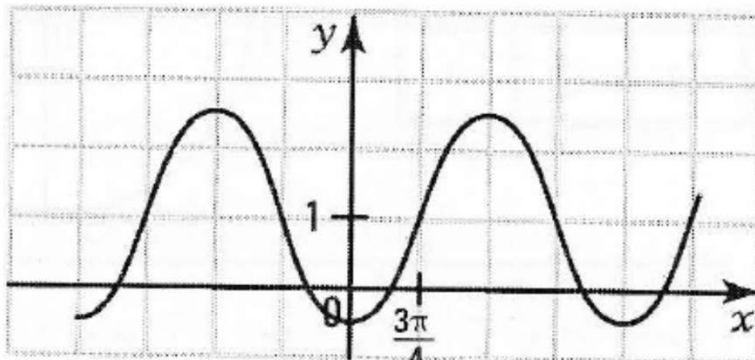
example #2

$$f(x) = 3 \cos 2\left(x - \frac{\pi}{2}\right) + 1$$



Finding the Rule

example #2



example #3