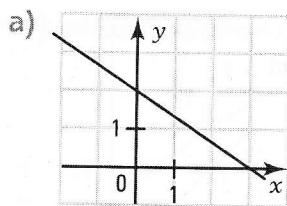
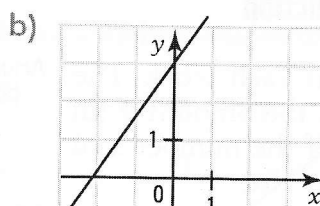


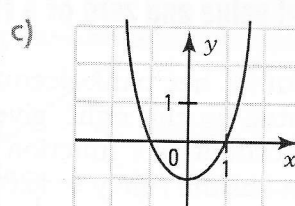
9. Determine the zero(s) and the initial value of the following functions.



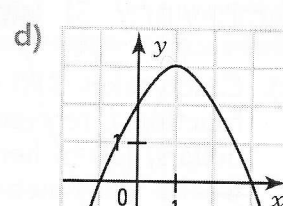
zero: 3
initial value: 2



zero: -2
initial value: 3



zeros: -1 and 1
initial value: -1

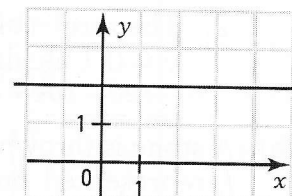


zeros: -1 and 3
initial value: 2

10. The function f on the right is represented by a horizontal line.

- a) What can we say about the zeros of this function? Justify your answer.

The zeros do not exist, because the graph will never intersect the x-axis since the line is parallel to the x-axis.



- b) What is the initial value of the function? 2

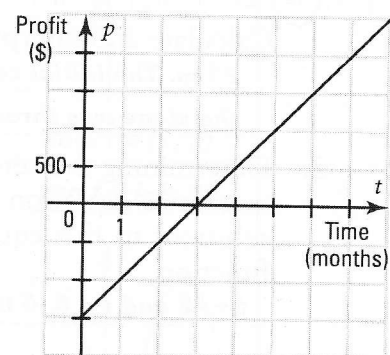
11. The graph on the right represents a function f which gives the profit p made by a company as a function of time t (in months) since its opening.

- a) What is the zero of this function? What does it represent?

3; it represents the number of months since opening for the profit to be zero.

- b) What is the initial value of this function? What does it represent?

-1500; it represents the company's profit at its opening.



12. The graph on the right represents a function f which gives the height h reached by a diver (in m) as a function of time t (in seconds).

- a) What are the zeros of this function? What do they represent?

1 s and 4 s. They represent the time at which the diver was at the surface of the water.

- b) What is the initial value of this function? What does it represent?

4 m. It represents the height from which the diver jumped.

