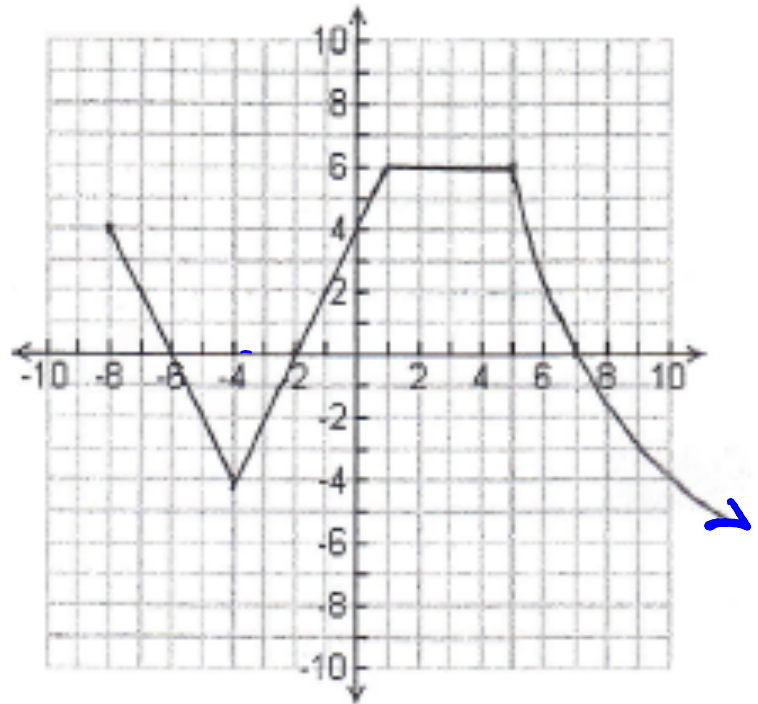


# Answers

## Properties of Functions



1. Domain:  $[-8, \infty)$
2. Range:  $-\infty, 6]$
3. Zero(s):  $\{-6, -2, 7\}$
4. Y-intercept: 4
5. Sign:
  - a. Interval(s) over which  $f(x)$  is positive:  $[-8, 6] \cup [-2, 7]$
  - b. Interval(s) over which  $f(x)$  is negative:  $[-6, -2] \cup [7, \infty)$
6. Variation\_
  - a. Interval(s) of increase:  $[-4, 5]$
  - b. Interval(s) of decrease:  $[-8, -4] \cup [1, \infty)$
7. Extrema (maximum or minimum if they exist): max: 6 min:  $\emptyset$